

## Solaris 7980g

---

Presentation Area Imager

### Quick Start Guide

Aller à [www.honeywellaidc.com](http://www.honeywellaidc.com) pour le français.

Vai a [www.honeywellaidc.com](http://www.honeywellaidc.com) per l'italiano.

Gehe zu [www.honeywellaidc.com](http://www.honeywellaidc.com) für Deutsch.

Ir a [www.honeywellaidc.com](http://www.honeywellaidc.com) para español.

Idź na stronę : [www.honeywellaidc.com](http://www.honeywellaidc.com) po quick start w języku polskim.

Перейти на русскоязычный сайт [www.honeywellaidc.com](http://www.honeywellaidc.com).

Pro češtinu jdi na [www.honeywellaidc.com](http://www.honeywellaidc.com).

Pre slovenčinu choď na [www.honeywellaidc.com](http://www.honeywellaidc.com)

Para Português, acesse [www.honeywellaidc.com.br](http://www.honeywellaidc.com.br).

日本語 : [www.honeywellaidc.com](http://www.honeywellaidc.com) をご覧ください。

如要到中国 [www.honeywellaidc.com](http://www.honeywellaidc.com) (简体)。

查看繁体版请登陆 [www.honeywellaidc.com](http://www.honeywellaidc.com)

한글 [www.honeywellaidc.com](http://www.honeywellaidc.com) 로 이동합니다 .

.[www.honeywellaidc.com](http://www.honeywellaidc.com) לגרסה בעברית; עבור לאתר האינטרנט בכתובת

انتقل إلى [www.honeywellaidc.com](http://www.honeywellaidc.com) للغة العربية



7980-ENUS-QS

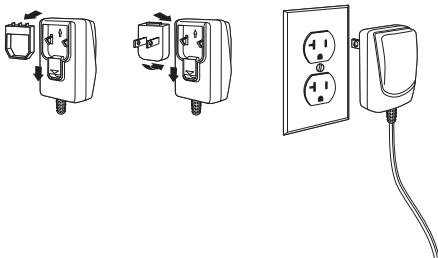
*Note: Refer to your user's guide for information about cleaning your device.*

For localized language versions of this document, go to [www.honeywellaidc.com](http://www.honeywellaidc.com).

## ***Getting Started***

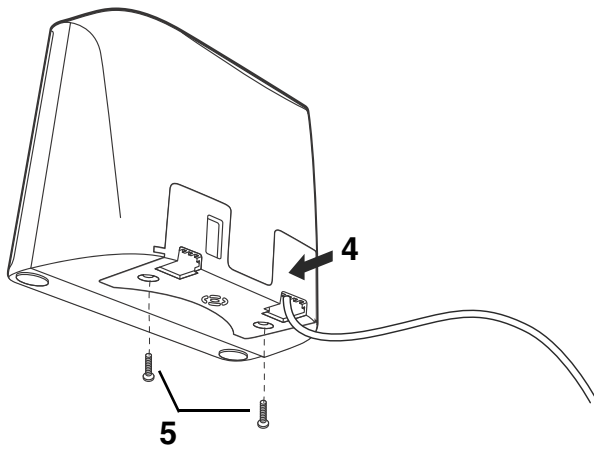
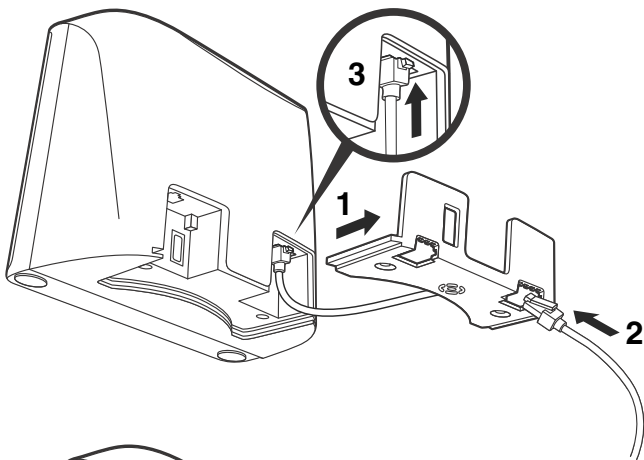
Turn off computer's power before connecting the scanner, then power up the computer once the scanner is fully connected.

### ***Power Supply Assembly (if included)***

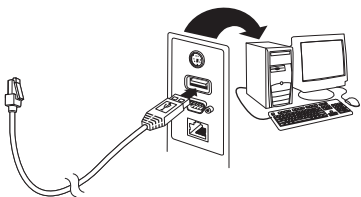


*Note: The power supply must be ordered separately, if needed.*

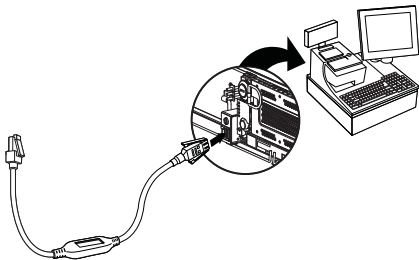
# Connecting the Scanner (USB and RS485)



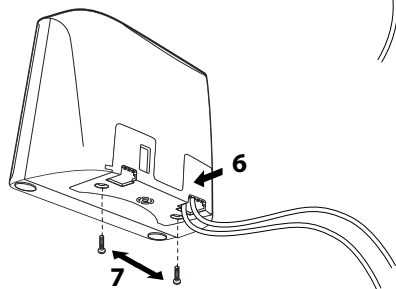
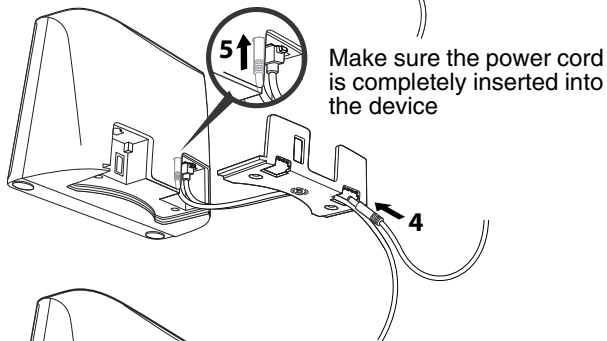
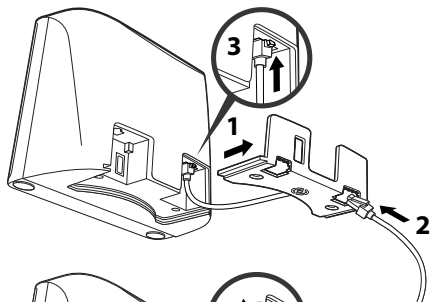
## ***USB:***



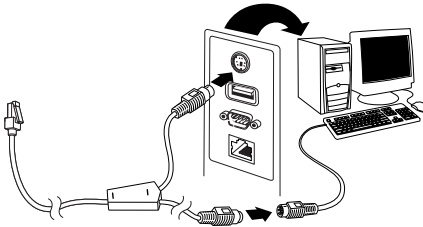
## ***RS485:***



## Connecting the Scanner (Keyboard Wedge and RS232 Serial Port)

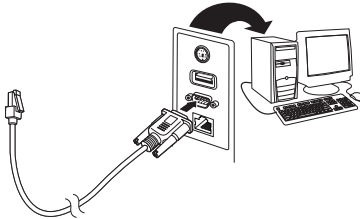


## ***Keyboard Wedge:***



*Note: For Keyboard Wedge, you must use the power supply.*

## ***RS232 Serial Port:***



*Note: For RS232, you must use the power supply.*

## ***Reading Techniques***

Present the bar code to the scanner. The aimer turns on and the LEDs turn up to read the code. If the light level in the room is not high enough, the code may not be read.

## ***Standard Product Defaults***

The following bar code resets all standard product default settings.



Standard Product Defaults

## ***USB PC Keyboard***

Scan the following code to program the scanner for a USB PC Keyboard.



USB PC Keyboard

## ***RS485 Interface***

The RS485 interface defaults to port 5B. If you have an IBM POS terminal using port 9B, scan the appropriate code below to program the terminal, then power cycle the cash register. If you have an IBM POS terminal using port 17, scan IBM Port 17 Interface bar code below.



IBM Port 9B HHBCR-1  
Interface



IBM Port 9B HHBCR-2  
Interface



IBM Port 17 Interface

Note: For additional RS485 interface selections, see the User's Guide for your product at our website, [www.honeywellaidc.com](http://www.honeywellaidc.com).

## USB Serial



If you are using a Microsoft® Windows® PC, you must download a driver from the Honeywell website ([www.honeywellaidc.com](http://www.honeywellaidc.com)). The driver will use the next available COM Port number.

Scan the following code to program the scanner to emulate a regular RS232-based COM Port. Apple® Macintosh computers recognize the scanner as a USB CDC class device and automatically use a class driver.



USB Serial

Note: No extra configuration (e.g., baud rate) is necessary.

## Function Code Transmit

When this selection is enabled and function codes are contained within the scanned data, the scanner transmits the function code to the terminal. Charts of these function codes are provided in your User's Guide. When the scanner is in keyboard wedge mode, the scan code is converted to a key code before it is transmitted.



Enable  
(Default)



Disable



# Keyboard Country

If your interface is USB Keyboard or Keyboard Wedge, your keyboard layout default is a US keyboard. To change this layout, refer to the chart below for your keyboard country. Scan the **Program Keyboard Country** bar code below, then scan the numeric bar code(s) for the appropriate Country Code from [page 2](#), then scan the **Save** bar code.

By default, national character replacements are used for the following characters: # \$ @ [ ] ^ ' { } ~ Refer to the ISO 646 Character Replacements chart in your User's Guide to view the character replacements for each country.



Program Keyboard Country

Country Code	Scan	Country Code	Scan
Belgium	1	Italy	5
Denmark	8	Norway	9
Finland	2	Spain	10
France	3	Switzerland	6
Germany/Austria	4	USA (Default)	0
Great Britain	7		



Save

For a complete list of country codes, see the User's Guide for your product at our website, [www.honeywellaidc.com](http://www.honeywellaidc.com).

## ***Turbo Mode***

This selection is a keyboard modifier, so it may only be used when your interface is USB Keyboard or Keyboard Wedge. The scanner sends characters to a terminal faster using Turbo Mode. If the terminal drops characters, do not use Turbo Mode.



Turbo Mode On



Turbo Mode Off

## ***Scan Modes***

When in **Presentation** mode, the scanner is activated when it “sees” a bar code.

When in **Streaming Presentation** mode, the scanner leaves the scan illumination on all the time and continuously searches for bar codes.

When in **Presentation - Mobile Phone** mode, your scanner is optimized to read bar codes from mobile phone or other LED displays.



Presentation Mode



Streaming Presentation Mode



Presentation - Mobile Phone

*Note: For additional scan modes, see the User's Guide for your product at our website, [www.honeywellaidc.com](http://www.honeywellaidc.com).*

## **Suffix**

If you want a carriage return after the bar code, scan the **Add CR Suffix bar code**. To add a tab after the bar code, scan the **Add Tab Suffix bar code**. Otherwise, scan the **Remove Suffix bar code** to remove the suffixes.



Add CR Suffix



Add Tab Suffix



Remove Suffix

## **Add Code ID Prefix to all Symbologies**

Scan the following bar code if you wish to add a Code ID prefix to all symbologies at once.



Add Code ID Prefix To All Symbologies

Note: For a complete list of Code IDs, see the User's Guide for your product at our website, [www.honeywellaidc.com](http://www.honeywellaidc.com).

## **Poor Quality PDF Codes**

This setting improves the scanner's ability to read damaged or badly printed PDF codes by combining information from multiple images. When **Poor Quality PDF On** is scanned, poor quality PDF code reading is improved, but the scanner's snappiness is decreased, making it less aggressive when reading good quality bar codes. This setting does not affect 1D bar code reading.



Poor Quality PDF Reading On



Poor Quality PDF Reading Off

# ***Data Format Editor Instructions***

The following are abbreviated instructions for entering a data format. For complete instructions refer to your User's Guide, available at our website, [www.honeywellaidc.com](http://www.honeywellaidc.com).

1. Scan the **Enter Data Format** symbol.
2. Primary/Alternate Format: scan **0** for Primary Format
3. Terminal Type: scan **099** for any terminal type
4. Code I.D.: scan **99** for any bar code type
5. Length: scan **9999** for any length bar code.
6. Editor commands: use the Programming Chart that follows.
7. Scan **Save** to save your entries.



Enter Data Format



Clear All Data Formats



Save

# Programming Chart



0



2



4



6



8



1



3



5



7



9



A



B



C



D



E



F



Save

## ***EZConfig-Scanning***

To access additional features for the scanner use EZConfig-Scanning, an online configuration software tool, available from our website at [www.honeywellaidc.com](http://www.honeywellaidc.com).

## ***Support***

To search our knowledge base for a solution or to log into the Technical Support portal and report a problem, go to [www.hsmcontactsupport.com](http://www.hsmcontactsupport.com).

## ***Limited Warranty***

For warranty information, go to [www.honeywellaidc.com](http://www.honeywellaidc.com) and click **Get Resources > Product Warranty**.

## ***Patents***

For patent information, see [www.hsmpats.com](http://www.hsmpats.com).

## ***User Documentation***

For the user guide and other documentation, go to [www.honeywellaidc.com](http://www.honeywellaidc.com).

## ***Disclaimer***

Honeywell International Inc. (“HII”) reserves the right to make changes in specifications and other information contained in this document without prior notice, and the reader should in all cases consult HII to determine whether any such changes have been made. The information in this publication does not represent a commitment on the part of HII.

HII shall not be liable for technical or editorial errors or omissions contained herein; nor for incidental or consequential damages resulting from the furnishing, performance, or use of this material.

This document contains proprietary information that is protected by copyright. All rights are reserved. No part of this document may be photocopied, reproduced, or translated into another language without the prior written consent of HII.

Copyright © 2015-2016 Honeywell International Inc. All rights reserved.