

# POWERSCAN™ 9600 SERIES

Handheld industrial scanners for 1D/2D barcode reading with top flexibility



## ULTRA-RUGGED WITH NEW BALANCED ERGONOMICS!

The PowerScan family of bar code readers are the ultimate industrial handheld scanners designed and constructed to withstand the toughest environmental conditions. The PowerScan 9600 imagers have an ultra-rugged design, an ergonomic shape with well-balanced weight to reduce operator stress during daily activities.

## MOBILITY ENHANCES PRODUCTIVITY

The PowerScan PM9600 cordless model further enhances the operator efficiency and safety with Datalogic's STAR Cordless System™. Bidirectional radio communication and display allow users to receive immediate feedback avoiding any risk of mistakes.

The PowerScan PBT9600 cordless model is enriched with Bluetooth® 5.0 that can be paired to any device supporting Bluetooth connections, or to the Bluetooth base station.

The BC9600 base/charger has a modular design and is available with multiple interface plug-ins for standard and industrial communication, such as RS-232, USB, Standard Ethernet and Industrial Ethernet protocols.

## WIRELESS CHARGING

The PowerScan 9600 scanner features Datalogic's Wireless Charging System. Based on inductive-charging technology, Datalogic's Wireless Charging System eliminates battery contacts and pins that often get dirty, bent, or broken over time – and this removes a key point of failure for devices used in industrial and retail functions.

## THREE OPTIC OPTIONS TO FULFILL ANY CUSTOMER NEED

The PowerScan 9600 area imagers are available in three different optics, to satisfy any customer need. The Standard Range optic is ideal for most of the applications requiring barcode reading at intuitive distance; the High Performance optic adds the capability to decode high density barcodes together with an increased depth of field on standard 1D/2D codes; the Document Capture model is thought for Wide Angle code reading and Document Capture applications.

## FEATURES

- Snappy omnidirectional reading on 1D, stacked and 2D codes, postal codes
- Standard Range and High Performance models
- Water and Particulate Sealing Rating: IP65 and IP67; Cradle IP65; 10 million hits trigger
- Center of gravity design
- Modular cradle design allowing interface expansion
- White light illumination
- High visibility OLED Display with 4-Keys /16-Keys keypad options
- Standard Range, High Performance and Document capture optics
- Datalogic's 3GL™ (3 Green Lights) technology and loud beeper for good-read feedback
- Datalogic's Motionix™ motion-sensing technology
- Wireless Charging reducing total cost of ownership
- EASEOFCARE Service Plans offer a wide range of service options to protect your investment, ensuring maximum productivity and ROI.

## INDUSTRIES - APPLICATIONS

- **Manufacturing Shop Floor:**
  - Work-in-Progress
  - Sub-Assembly
  - Component Tracking
  - Quality Control
  - Time and Cost Analysis
  - Machine Replenishment /Configuration
  - Line Inventory Control
- **Warehouse and Logistic Centers:**
  - Shipping / Receiving
  - Parcel Preparation
  - Picking / Put Away
  - Automatic Sorting Back-Up
  - End of Line Sorting



## POWERSCAN 9600 SERIES

# TECHNICAL SPECIFICATIONS

### WIRELESS COMMUNICATIONS

#### PowerScan PM9600

**Datalogic STAR Cordless System**  
Radio Frequency: 433 MHz; 910 MHz;  
Effective Radiated Power: 433 MHz: < 10 mW;  
910 MHz: < 50 mW; Point-to-Point/Multi-Point  
Configuration; Max. Readers per Radio Receiver: 16;  
Two Way Communications.  
Radio Range (Open Air): 433 MHz: 150 m / 492 ft  
low speed; 100 m / 328 ft high speed  
910 MHz: 230 m / 754 ft low speed; frequency hopping; 180 m /  
590 ft high speed

#### PowerScan PBT9600

**Bluetooth Wireless Technology**  
Radio Frequency: 2.4 GHz; Profiles: SPP (Serial Port Profile) and  
HID (Human Interface Device); Protocol: Bluetooth 5.0 Certified.  
Class 1, Class 2 and Class 3; Radio Range (Open Air): 100.0 m /  
328.0 ft; Range distances are measured using the base station.  
Range with connection to other Bluetooth peripherals.  
Security: Data Encryption; Scanner Authentication

### DECODING CAPABILITY

#### 1D / Linear Codes

Auto discriminates all standard 1D codes including GS1  
DataBar™ linear codes.

#### 2D Codes

Aztec Code; China Han Xin Code; Data Matrix; MaxiCode;  
Micro QR Code; QR Code; Dot Code

#### Postal Codes

Australian Post; British Post; China Post; IMB; Japanese  
Post; KIX Post; Planet Code; Postnet; Royal Mail Code  
(RM4SCC)

#### Stacked Codes

EAN/JAN Composites; GS1 DataBar Composites; GS1  
DataBar Expanded Stacked; GS1 DataBar Stacked; GS1  
DataBar Stacked Omnidirectional; MacroPDF; MicroPDF417;  
PDF417; UPC A/E Composites

#### Digital Watermarking

Digimarc Barcodes (HP and DC models)

### ELECTRICAL

#### Current

Corded models: Operating (Typical):  
SR: 200mA @ 5V; 120mA @ 12V. HP/DC: 280mA @ 5V / 140mA  
@ 12V. Standby/Idle (Typical): 187mA @ 5V / 92mA @ 12V.  
Cordless models: Operating 480 mA @ 3.7 V. Charging  
(Typical) < 15 W.  
Cradle BC96xx only: 150 mA @ 5 V (Operative)

#### Input Voltage

Corded models: 5 - 30 VDC ± 5%  
Cordless models: Host powered: 5V DC ± 5% or 10 - 30 VDC  
External power supply: 10 - 30 VDC ± 5%

#### Battery

Battery Type: Lithium-Ion: 3350 mAh  
Charge time @ 12 VDC: 2.5 hours to charge up to 95%,  
3.2 hours to charge 100%, External Power.  
Reads per charge: 80,000

### ENVIRONMENTAL

#### Ambient Light

0 - 100,000 lux

#### Drop Resistance

Withstands 50 drops from 2.5 m / 8.2 ft @ 20 °C / 68 °F;  
Withstands 50 drops from 2.0 m / 6.6 ft @ -20 °C / -4 °

#### Trigger Resistance

Withstands 10 million hits

#### ESD Protection (Air Discharge)

20 kV

#### Humidity (Non-Condensing)

0 - 95%

#### Particulate and Water Sealing

IP67 and IP65; Cradle IP65 (specific models)

#### Temperature

Operating: -20 to 50 °C / -4 to 122 °F  
Storage/Transport: -40 to 70 °C / -40 to 158 °F  
Charging: 0 to 40 °C / 32 to 104 °F nominal; 0 to 35 °C / 32 to  
95 °F ideal

### INTERFACES

#### Interfaces

RS-232 / USB / Ethernet and Industrial Protocols

### PHYSICAL CHARACTERISTICS

#### Colors Available

Yellow/Black

#### Dimensions H x L x W

19.8 x 14.0 x 7.9 cm / 7.8 x 5.5 x 3.1 in

#### Display

PM9600-D/DK: 1.8" OLED graphic display;  
Font Dimensions: User selectable.

#### Keyboard

PM9600-D: 4 Keys, PM9600-DK: 16 Keys; Configurable

#### Weight

PD9630: 318 g / 11.2 oz, PBT9600: 415 g / 14.6 oz,  
PM9600: 425 g / 15.0 oz, PM9600-D: 445 g / 15.7 oz,  
PM9600-DK: 455 g / 16.0 oz

### READING PERFORMANCE

#### Imager Sensor

1280 x 800 pixels

#### Light Source

Aiming: 630 - 680 nm VLD  
Illumination: White LED reading light

#### Print Contrast Ratio (Minimum)

15%

#### Reading Angle

Pitch: +/- 52°; Roll (Tilt): 360°; Skew (Yaw): +/- 52°

#### Field of View

SR and HP: 38° H, 24° V

#### Reading Indicators

Beeper (Adjustable Tone and Volume); Datalogic's 3GL™  
(Three Green Lights) technology for good-read feedback;  
Datalogic 'Green Spot'; Dual Good Read LEDs; Vibration.

#### Resolution (Maximum)

SR/DC: 1D Codes: 3 mil; 2D Codes: 6 mil  
HP: 1D Codes: 2.5 mil; 2D Codes: 4 mil

### READING RANGES

#### Typical Depth of Field

Minimum distance determined by symbol length and scan  
angle. Printing resolution, contrast, and ambient light  
dependent.

#### SR Models

##### Code 128

5 mils: 6.4 to 30.9 cm / 2.5 to 12.2 in

20 mils: 4 to 103.7 cm / 1.6 to 40.8 in

40 mils: 5.5 to 175 cm / 2.2 to 68.9 in

EAN/UPC 13 mils: 4 to 67.5 cm / 1.5 to 26.5 in

DataMatrix 10 mils: 6 to 30 cm / 2.5 to 11.8 in

#### HP Models

##### Code 128

2.5 mils: 6.3 to 11.5 cm / 2.5 to 4.5 in

5 mils: 3.8 to 41 cm / 1.5 to 16.1 in

40 mils: 5.5 to 242.9 cm / 2.1 to 95.6 in

EAN/UPC 13 mils: 4 to 120 cm / 1.5 to 40.2 in

PDF417 10 mils: 0.5 to 46.1 cm / 0.2 to 18.1 in

DataMatrix 10 mils: 4.2 to 32 cm / 1.6 to 12.6 in

### SAFETY & REGULATORY

#### Agency Approvals

The product meets necessary safety and regulatory  
approvals for its intended use.  
The Regulatory Addendum for this product can be  
referred to for a complete list of certifications.

#### Environmental Compliance

Complies to China RoHS; Complies to EU RoHS;  
Complies to R.E.A.C.H.

#### Laser Classification

Caution Laser Radiation - Do not stare into beam CDRH  
Class II; IEC 60825 Class 2

#### LED Classification

IEC 62471 LED Class: Exempt

### UTILITIES

#### Datalogic Aladdin™

Datalogic Aladdin configuration program is available for  
download at no charge.

#### OPOS / JavaPOS

OPOS and JavaPOS Utilities are available for download  
at no charge.

### WARRANTY

#### Warranty

3-Year Factory Warranty

## ACCESSORIES

### Base Stations / Chargers



BC9630 Base station/charger Multi-Interface

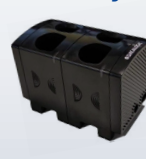
BC9631 Base station/charger Multi-Interface, IP65

### Battery



RBP-PM96 Removable battery

### Multi-Battery Charger



MC-P096-M2 Multi Battery Charger 2 slots

MC-P096-M4 Multi Battery Charger 4 slots

MC-P096-E2 Extension modules 2 slots

### Holder



HLD-P096 Desk/Wall Holder (HLD-9600)